



Inspire
Better Living

THE INTRODUCTION OF TOA PAINT (VIETNAM) CO., LTD



www.toagroup.com.vn



Inspire
Better Living

VISION & MISSION

VISION: To emerge as the leading brand in Vietnam by harnessing state-of-the-art paint technologies; and to provide energy-saving and environment-friendly products that cater customers' needs.

MISSION: To persistently conduct researches and to offer a wide range of eco-friendly products through projects, OEM and retail channels, aiming to achieve profitable growth and sustainable development.

INDEX

About TOA Group	4
• The Development of TOA Group (Thailand)	7
• World Distribution System	8
• Project References	10
About TOA Paint Vietnam	16
• The Development of TOA Paint (Vietnam) Co., Ltd	18
• Paint Technologies	20
• Certificates	22
• Awards	23
• Project References	24
• The Process Of Sales And After-Sales Services	33
Product Portfolio	34
Decorative Paints	37
• Recommended Paint System	38
Construction Chemicals	54
Protective Coatings	68
• Recommended Paint System	72

TOA

Paint Thailand

INTRODUCTION

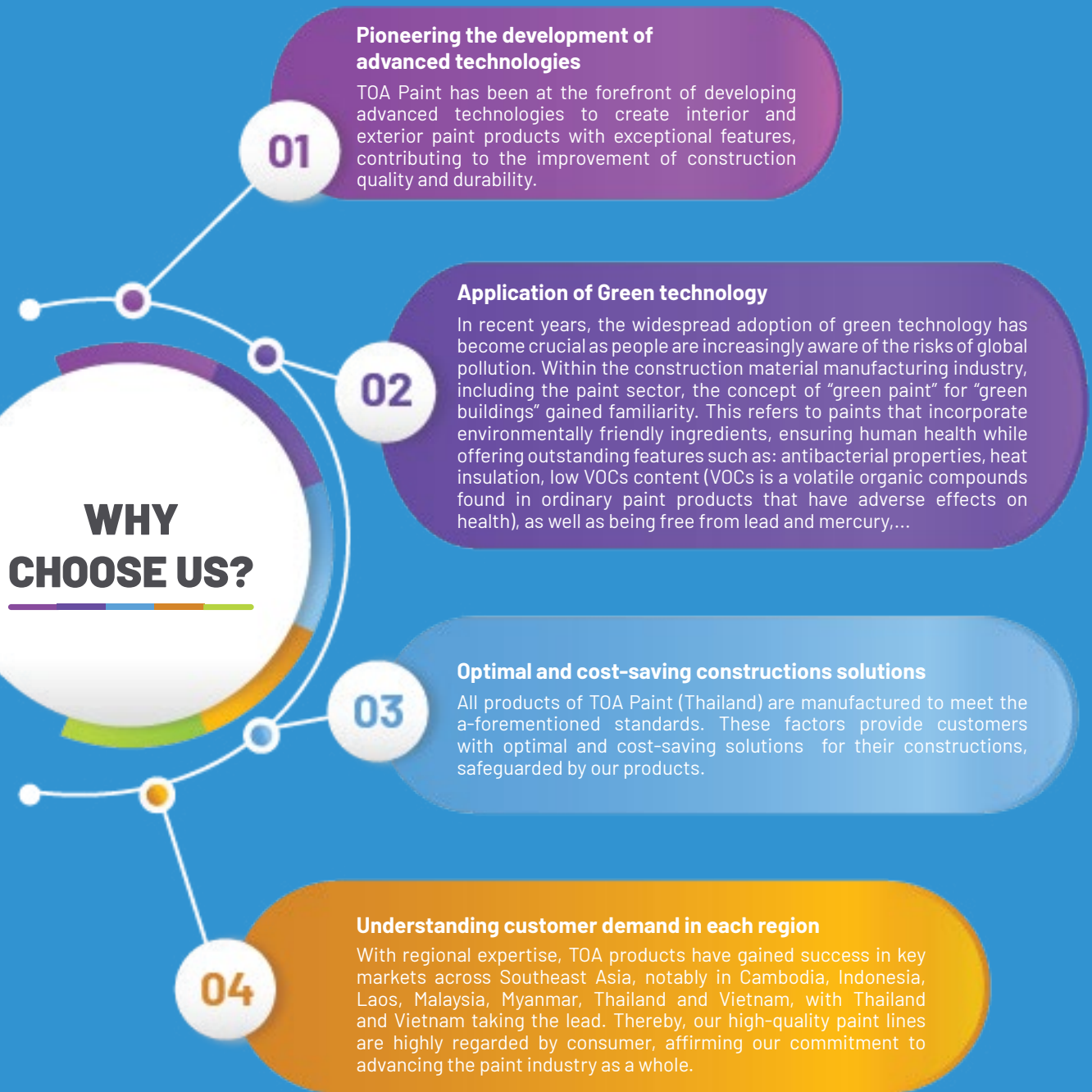
With nearly 60 years of experience, TOA Paint (Thailand) Public Company Limited (“TOA Paint”) is the No.1 paint brand in Thailand and the technological coatings manufacturer in Southeast Asia.

TOA Paint produces and conducts businesses in the following fields: production of paints and coating materials, chemicals, petrochemicals, car paint technology,...

In addition to the remarkable success in Thailand with an impressive market share of nearly 50% in the decorative paint segment, TOA Paint is making strong inroads in numerous countries within the region and beyond. These include Vietnam, Malaysia, Laos, Cambodia, India, Sri Lanka, Indonesia,...

The pivotal factor that contribute to TOA Paint’s success is the effort to conduct researches and to apply advanced technologies in creating products with outstanding features.

ABOUT TOA GROUP



THE DEVELOPMENT OF TOA GROUP (THAILAND)

1979

TOA is the first paint manufacturer in Thailand and Southeast Asia to successfully launch SuperShield premium paint with 100% pure acrylic paint using technology from the United States.

1989

Established the Production Plant in Bangna, Thailand.

1995

Established TOA Paint (Vietnam) Co., Ltd.

2003

TOA launched SuperShield DuraClean - ultra premium interior paint, which was the first and only product to apply Microban® antibacterial technology of the US.

2002

Launched TOA 7IN1 - ultra premium exterior emulsion paint which is 3 times more elastomeric and maximum coverage, effectively protects the surface of the construction.

2001

Established TOA Color World program and started providing TOA Color World Solution Services using our Auto Tinting Machines.

2004

Established TOA Paint Products Sdn. Bhd. and TOA Coating Products Sdn. Bhd. in Malaysia.

2007

- Established TOA Paint (Laos) Co., Ltd.
- Launched TOA Shield-1 Nano Silicone.

2009

Launch TOA ExtraShield and a Woodstain topcoat system for wood and water-based Industrial Lacquer.

2015

Marked the 50 years anniversary of establishment with the Greenovation message: "We Paint Happiness".

2013

Developed "Ultra Low VOCs" technology with the lowest VOCs content in paint market.

2010

Applied Titanium to the new product SuperShield Titanium, helping to protect constructions up to 15 years.

2016

Established TOA Paint in Myanmar, Cambodia & Indonesia:
- TOA Coating (Myanmar)
- TOA Paint (Cambodia)
- PT TOA Coating Indonesia

2017

TOA Group (Thailand) had done IPO session and raised 12.2 billion baht, equivalent to 368.36 million USD

2018

2018: Established TOA Coating (Cambodia) Co., Ltd which supported building the new manufacturing plant.

2022

Launched an ultra premium interior emulsion paint called TOA Organic Care. The ingredients were plant-based materials, the first and only one in Thailand that certified BioPreferred® by USDA USA, provides the highest safety for users and environment

2021

TOA acquired the tile business by holding 52.0% ordinary shares in 2 companies, namely Phacha Enterprise Co., Ltd. and Phawatri Intertrade Co., Ltd. in Feb 2021.

WORLD DISTRIBUTION SYSTEM

Curacao

Ghana

THAILAND

TOA Head Quarter and Industrial Center:

31/2 Moo 3, Bangna-Trad Road, Bangsaothong, Bangsaothong, Samutprakan 10570, Thailand.

Tel: +66(0)2-335-5555 / +66(0)2-335-5777

Email: contact@toagroup.com

Website: www.toagroup.com

MYANMAR

TOA Coating (Myanmar) Co., Ltd

Commercial Office: Room No. 1602-1603 , Level 16, Office Tower 2, Time City Complex, No.8 Quarter, Kyuntaw Street, Kamayut Township, Yangon Myanmar.

Tel: +95 012309314 / +95 012309315

Email: customer-care.myanmar@toagroup.com

Thilawa SEZ Factory:

Lot No. C-21 ,Zone A, Thilawa Special Economic Zone, Kamayut Township, Yangon, Myanmar.

Tel: +95(0)9 449 700 110

Email: marketing_toamm@toagroup.com,
recruit.mm@toagroup.com

MALAYSIA

Toa Paint Products Sdn. Bhd.

Office: B3A-30 (Floor 3A), 10 Boulevard, Lebuhraya Sprint, PJU 6A, 47400, Petaling Jaya, Selangor, Malaysia.

Tel: + 603 7725 2699

Website: www.toagroup.com.my

Factory: Lot 63802, Jalan Telok Gong, Telok Gong, 42000 Port Klang, Selangor, Malaysia.

Tel: +603 3134 1629

Email: toa.my@toagroup.com

CAMBODIA

TOA Coating (Cambodia) Co., Ltd.

Factory: Phnom Penh Special Economic Zone Lot: P2-087-088, National Road No. 4, Boeung Thom III Village, Sangkat Boeung Thom, Khan Porsenchey, Phnom Penh, Cambodia.

Sales office: The Point Community Mall

No.#113C, Mao Tse Tung Blvd, Sangkat Toul Svay Prey, Khan Beong Keng Kong, Phnom Penh, Cambodia

Tel: +855 95 999 538



LAOS

TOA Paint (Laos) Sole Co.,Ltd

Factory: 279 Unit 6, Thadeua Road (Km15), Ban Nahai, Hatxayfong District, Vientiane Capital Lao PDR.

Tel: (856-021) 812082,812133

Email: info_toal@toagroup.com

Website:www.laos.toagroup.com

INDONESIA

PT Toa Paint Indonesia

Office: APL Tower Lt. 7 Unit T8; Jl. Letjend S.Parman Kav, 28 Tanjung Duren Selatan Grogol, Petamburan Jakarta Barat, DKI Jakarta 11470.

Factory: : Kawasan Industri Millenium Blok F1 RT 004/002, Desa Peusar, Kec. Panongan Tangerang-Banten 15710.

Tel: (+62) 21-2903-4458-61

Email: cs.mkt@toagroup.com

VIETNAM

TOA Paint (Vietnam) Co., Ltd.

Office: 8th Floor, Room 8.5, Etown 3 Building, 364 Cong Hoa Street, Ward 13, Tan Binh District, Ho Chi Minh City.

Tel: (028) 3813 1999

Factory: Road No.2, Tan Dong Hiep A IP, Di An City, Binh Duong Province.

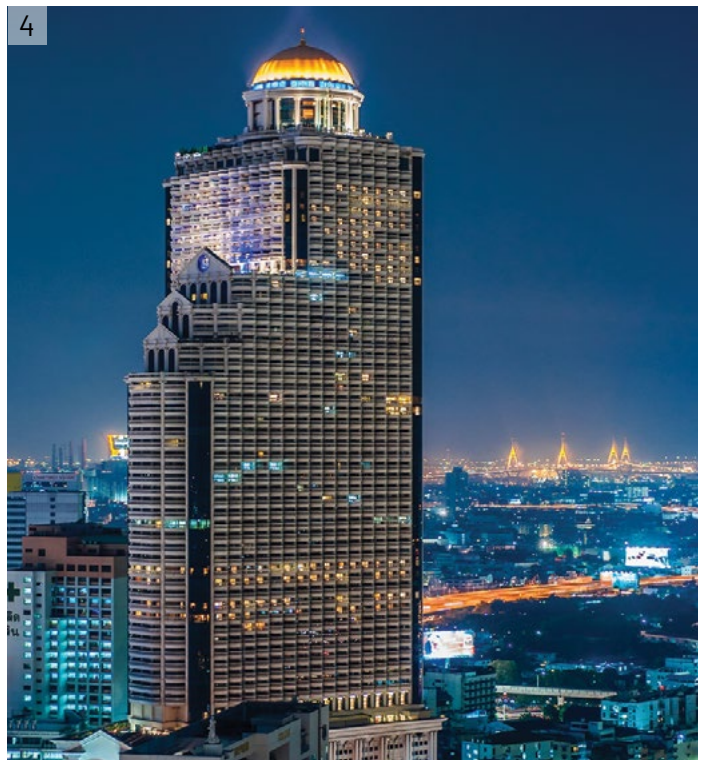
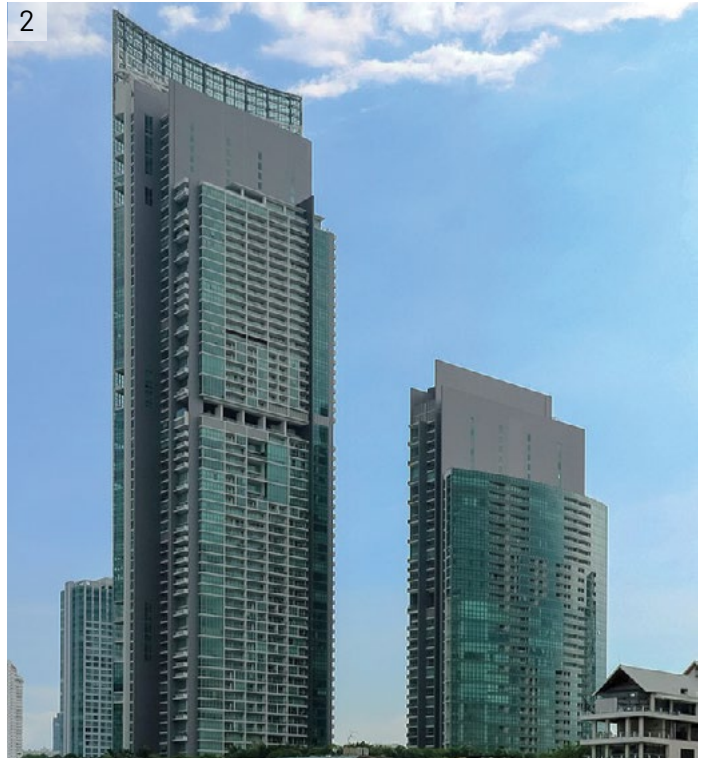
Tel: (0274) 3775 678

TOA Performance Coating (Vietnam) Co., Ltd.

Office: Etown 1 Building, 9th Floor, Room 9.8B, 364 Cong Hoa, Ward 13, Tan Binh District, Ho Chi Minh City.

Tel: (028) 3842 8883

PROJECT REFERENCES



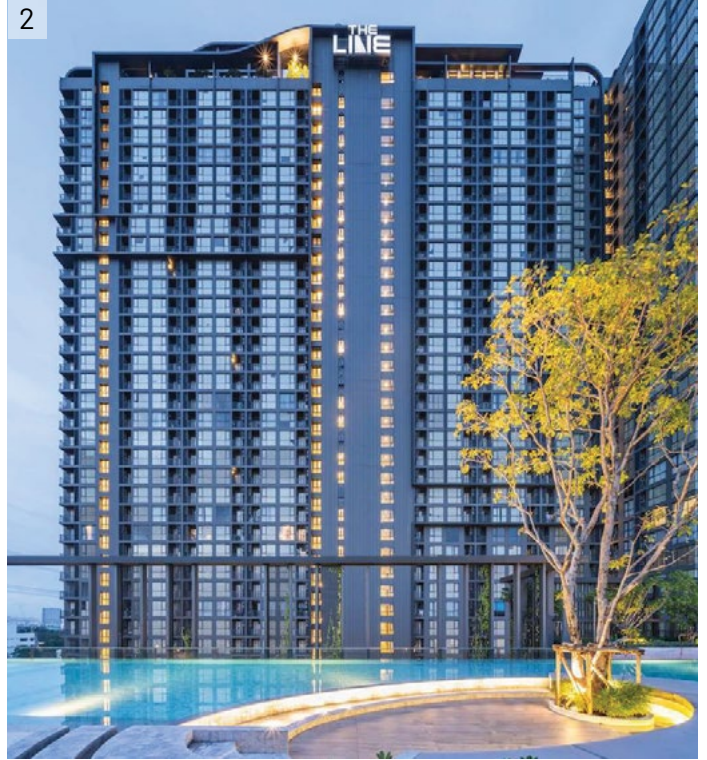
1: BAIYOKE SKY OFFICE/ BANGKOK

2: THE RIVER OFFICE/ BANGKOK

3: MAHANAKHON TOWER/ BANGKOK

4: LEBUA AT STATE TOWER/ BANGKOK

PROJECT REFERENCES



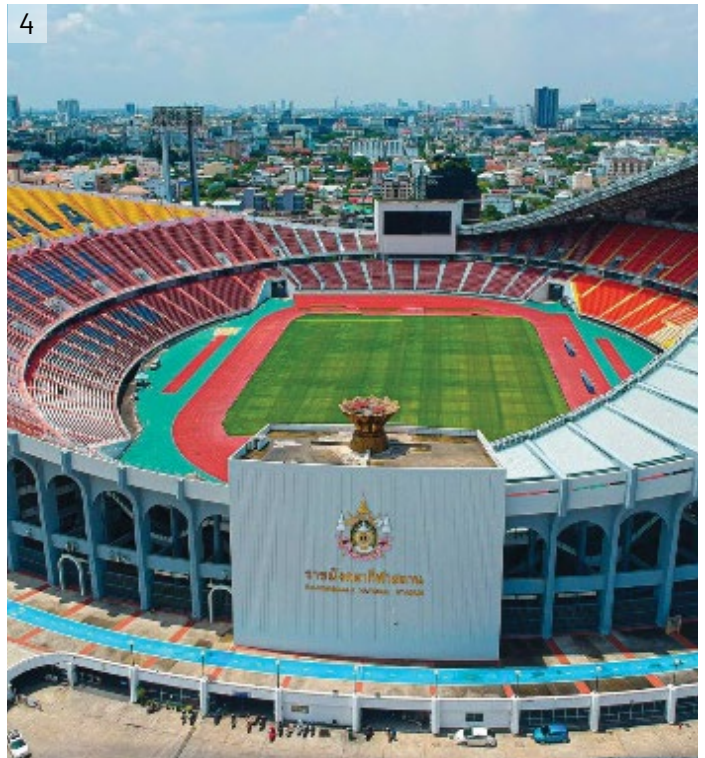
1: SAMYAN MITRTOWN OFFICE TOWER/ BANGKOK

2: THE LINE WONGSAWANG LUXURY CONDO/ BANGKOK

3: EDGE CENTRAL PATTAYA LUXURY CONDO/ CHON BURI

4: THE PARQ OFFICE TOWER/ BANGKOK

PROJECT REFERENCES



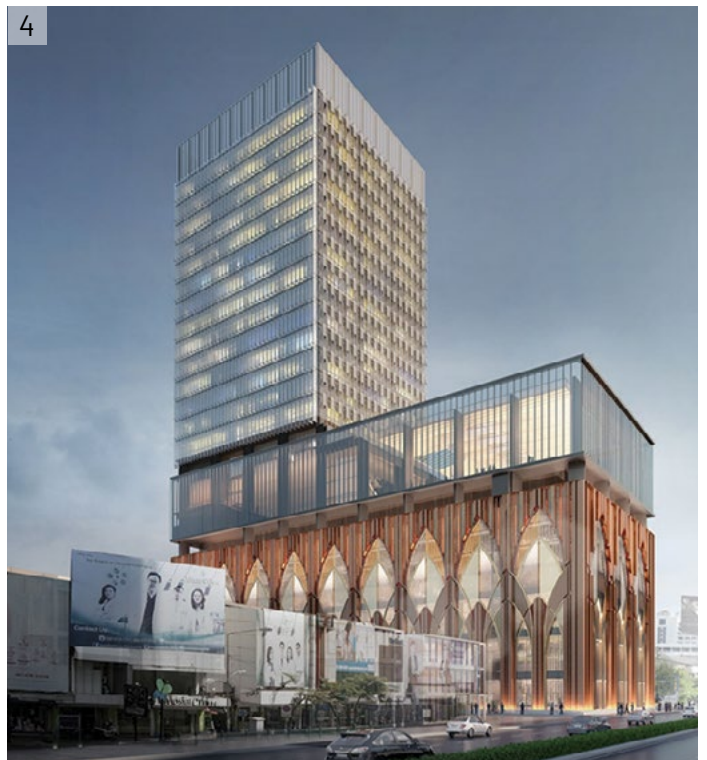
1: CENTARA GRAND HOTEL/ BANGKOK

2: REFLECTION JOMTIEN BEACH PATTAYA/ CHON BURI

3: THE GRAND RAMA II LUXURY CONDO/ SAMUT SAKHON

4: RAJAMANGALA NATIONAL STADIUM/ BANGKOK

PROJECT REFERENCES



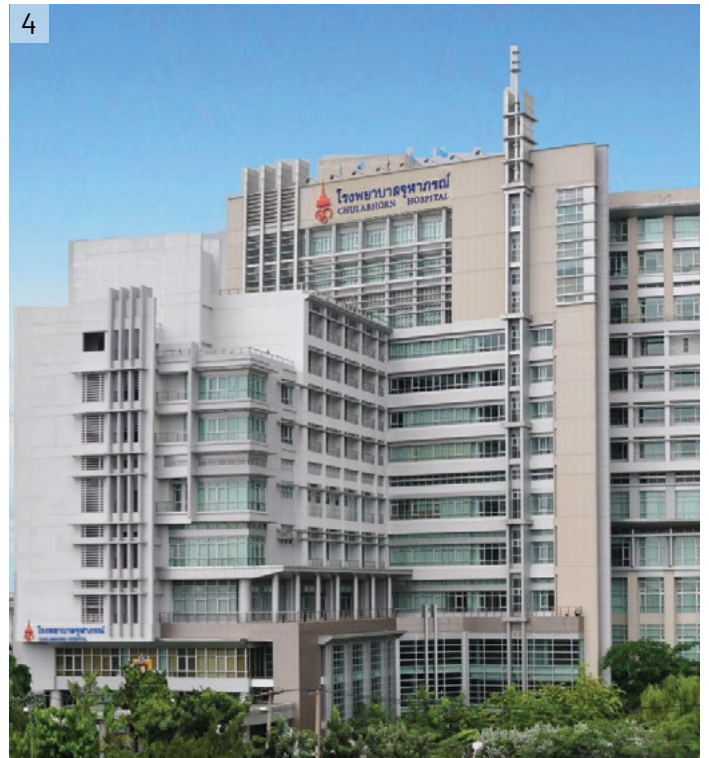
1: EXPRESSWAY AUTHORITY OF THAILAND/ BANGKOK

2: RAMA9 NATIONAL SCIENCE MUSEUM/ PATHUMTANI

3: BENZ BKK KANCHANAPISEK/ BANGKOK

4: SIAMSCAPE (BLOCK H)/ BANGKOK

PROJECT REFERENCES



- 1: SIAM PREMIUM OUTLETS/ BANGKOK
- 2: CHIANG MAI UNIVERSITY/ CHIANG MAI
- 3: BANGKOK HOSPITAL CHANTHABURI/ CHANTHABURI
- 4: CHUL ABHORN HOSPITAL/ BANGKOK

PROJECT REFERENCES



1: SATELLITE BUILDING 1 – SUVARNABHUMI AIRPORT/ SAMUTPRAKARN

2: HI-SPEED RAIL & RAILWAY STATION/ BANGKOK - PHITSANULOK

3: MRT SOUTH PURPLE LINE/ BANGKOK

TOA

Paint Vietnam

INTRODUCTION

TOA Paint made early entry into Vietnam market in the 1990s through exports. With decisive and long-term investment strategies in recent years, TOA Paint Vietnam has achieved remarkable recognition, earning prestigious awards such as the “Premium Products” – Golden Dragon Awards 2023, Top 10 Asia - Pacific Outstanding Brands 2020, Top 10 Leading Brands in Vietnam in 2019.

TOA Paint Vietnam is headquartered in Ho Chi Minh City, with a factory located in Binh Duong and 4 representative offices in Hanoi, Da Nang, Nha Trang and Can Tho. With a distribution network spanning over 1,000 stores across 63 provinces, TOA Paint Vietnam serves as an exemplary model for TOA Group’s expansion efforts in various countries within the region and around the world.

THE DEVELOPMENT OF TOA PAINT VIETNAM



TOA Paint Vietnam was established.



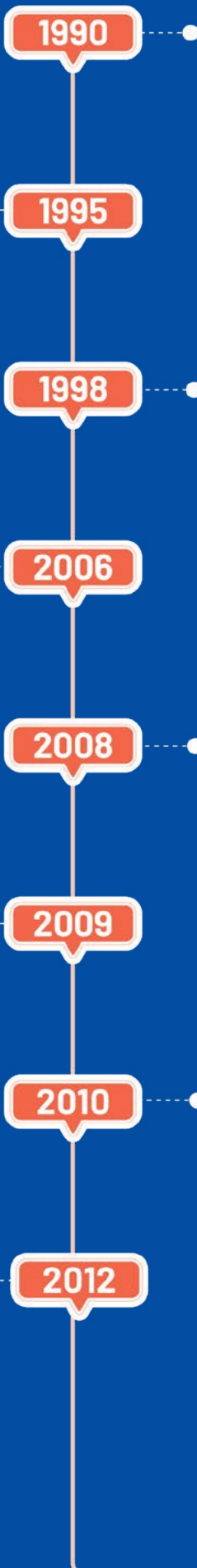
The expansion of TOA factory with modern fully automatic production lines in Tan Dong Hiep A Industrial Park, Di An City, Binh Duong



Launched premium interior paint TOA NanoClean with Nano technology - anti-bacteria up to 99.9% and easy clean.



Re-launched ultra premium exterior paint SuperShield protecting projects up to 10 years with Titanium Triple Protection & Self-cleaning technology.



TOA paint was imported into Vietnam.



The first TOA factory went into operation.



Launched premium exterior paint TOA NanoShield with Nano technology.



Launched premium exterior paint TOA NanoShield Sunblock.

THE DEVELOPMENT OF TOA PAINT VIETNAM



Officially launched TOA Construction Chemicals.



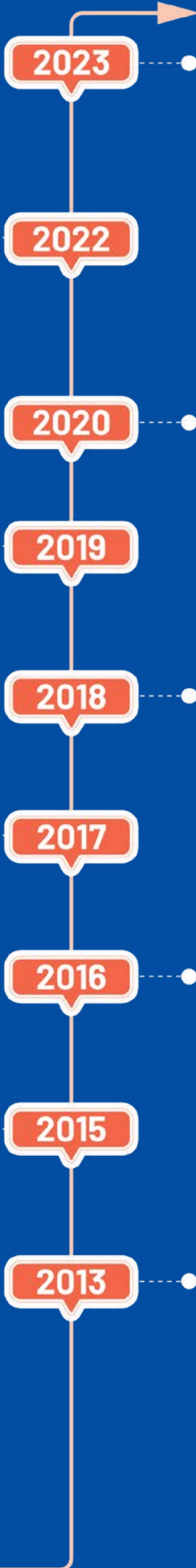
Certified Green Label - environmentally friendly products.



Launched SuperShield exterior emulsion paint protecting projects up to 15 years with Ti-Pure™



Celebrated the 20 years anniversary of TOA Paint Vietnam Co., Ltd.



To build a modern 3-ha distribution center.

2022



Celebrated the 25 years anniversary of TOA Paint Vietnam Co., Ltd.

2019



Launched ultra premium interior paint SuperShield DuraClean A+ with Air Detoxify technology.

2018

2017



Applied 3M™ technology from the US for TOA 4 Seasons group.

2016

2015



Applied 4 Powers for TOA 4 Seasons product group.

2013

International standard technology - the key to create quality products that TOA Paint has developed and researched to create new paint technologies, to meet the highest standards and to fulfill the needs of both domestic and international customers.

1. Titanium Triple Protection technology

With 3 protective layers of Titanium, Titanium Triple Protection technology helps the paint film 3 times more durable than conventional paints.



2. Self-cleaning technology

Self-cleaning technology uses acrylic emulsion polymer with double molecule - an inside layer is soft to make particles easily and an outside layer is firm in order that the dirt can't stick on the paint film. The rain spreads and waters surface, washes away all the dirt on the paint film.



3. Air Detoxify technology

Air detoxify technology absorbs harmful formaldehyde in the air and converts it into water vapor, purifying the air to help fresh and safe indoor air.



At TOA Group, each subsidiary has consistently applied available technologies to create products that meet international standards. TOA Paint has forged close collaborations with prominent companies and corporations from France, Germany, Japan, the Netherlands, the USA and Singapore. As a result, TOA Paint has earned the trust and confidence of customers who rely on our products to meet the most stringent international standards.

4. Hybrid Nano technology

Hybrid Nano technology with 1/billion particle size, improves anti dirt pick-up and waterproofing, protects building, house from rain-water, wet climate. Heat resistant pigment Nano Solar Pigment helps paint film reflect sunlight up to 95%, thus reducing the temperature in the house 3°C - 5°C saving electricity and energy up to 30%.



5. Silver Nano technology

Silver Nano particles can kill up to 99.9% bacteria which help to protect your whole family's health and fresh living environment.



6. Green Label

Green technology applied in TOA Paint minimizes the use of volatile organic compounds in paint, contributing to protecting the environment and human health from carcinogenic agents. Ingredients of current TOA Paint products:

- No added lead and mercury
- APEO free - Low volatile organic compounds (VOCs)
- Does not use formaldehyde



7. Clean Max technology

Clean Max particles with super small size move in tiny holes between pigments and additives to create a smooth finishing film to stop the dust from penetration, prevent the formation of stains, which helps scrubbing and cleaning become easier and more convenient.



CERTIFICATION

All products manufactured by TOA Group are well recognized and approved by customers. To achieve this level of recognition, TOA Group is committed to producing high quality products using latest technologies, tailored to meet the specific needs of customers. This approach has not only garnered numerous awards for the group but also established its reputation in the global market. TOA Paint Vietnam inherits and upholds these achievements from TOA Paint Thailand.

1. ISO 9001:2015

Quality Management System



2. ISO 14001:2015

Environmental Management System



3. ISO 45001:2018

Occupational Health and Safety Management System



4. ISO 50001:2018

Energy Management System



5. Certificate Regulation

- QCVN 16:2019/BXD - National technical regulations on products, goods of building materials.
- QCVN 08:2020/BCT - National technical regulation on the limits of lead content in paints.



6. Certificate Standard

TCVN 8652:2012/TCVN 8652:2020 - National standard for Wall emulsion paints - Specifications.



TCVN 5730:2008 - National standard for alkyd paints - General technical requirements.



TCVN 9014:2011^(*) - National standard for epoxy paints.



TCVN 7239:2014 - National standard for Portland cement - Based skim coat.



TCVN 9013:2013^(*) - National standard for Polyurethane paint for steel structures.



JIS K 5531:2003^(*) - Standard for Nitrocellulose lacquer.



BS EN 14891:2017 - Liquid applied water impermeable products for use beneath ceramic tiling bonded with adhesives.



7. Green Label

Established in 1992, Green Label certification is administered by the Singapore Environment Council SEC, which licenses eco-friendly industrial and consumer products that meet the Council's ecological standards of Singapore Environmental Council.



1. 22nd Golden Dragon Award - "Premium Products" Category

TOA Paint Vietnam was honored to receive the 22nd Golden Dragon Award in the category of "Premium Products" by the Ministry of Foreign Affairs in coordination with Vietnam Economic Review and the People's Committee of Da Nang city. This award is a recognition of the contributions of TOA Paint Vietnam for the research and application science and technology to produce high-class and outstanding quality products for consumers.



2. Top 10 Asia - Pacific Outstanding Brands 2020

The award is evaluated and selected by the Editorial Board of the Asia - Pacific Economic Review in collaboration with relevant agencies and international organizations. This is a recognition of the contributions of TOA Paint Vietnam in research and application of science & technology to produce high-class and outstanding quality products for consumers.



3. Top 10 Leading Brands in Vietnam 2019

The 6th Leading Brands in Vietnam 2019 survey & communication program is a place to exchange, to meet and to connect creatively among the businesses with prestigious products and services, to honor the brands that make positive and effective contributions to the high quality products and services and commitment to serve customers better day by day. TOA Paint Vietnam is honored to receive this award for the both TOA NanoShield and TOA NanoClean premium water-based paints.



4. Corporate Credit Index - Trusted Brands 2016

Trusted Brands is an award given to reputable businesses that apply an international quality management system, with good quality & outstanding customer service. The award shows customer love and trust in TOA Paint Vietnam. TOA's quality and reputation is always maintained at the highest level.



5. Top 10 ASEAN Strong Brands for Sustainable Development 2015

The award is organized, sponsored and supported by the ASEAN Times, the ASEAN Business Council Network, the Consulate General of ASEAN countries, the ASEAN Business Associations, the Working Department of the Ministry of Culture, Sports and Tourism and some other units.



6. Top Brands

Top Brands 2014 is jointly reviewed and awarded by the Economic Research Institute, Vietnam Consumer Research Center and Global GTA (United Kingdom).



7. Sustainable development enterprises 2014

This is an important award marking the sustainable development of TOA paint in the context of the country's many difficulties, step by step affirming TOA Paint Vietnam's No. 1 technology in the paint industry.



8. SuperBrands

SuperBrands is an award for businesses that earn the credit of customers not only in a country but also in the international market.

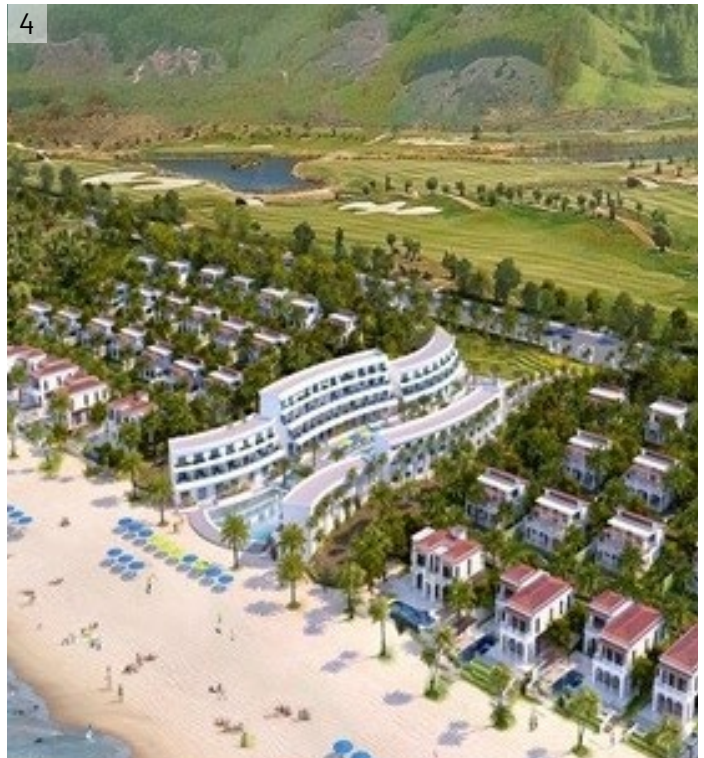


9. Prime Minister's Export Award 2003

Typical Product Award, Export, presented by the Prime Minister of Thailand.



5-STAR HOTELS



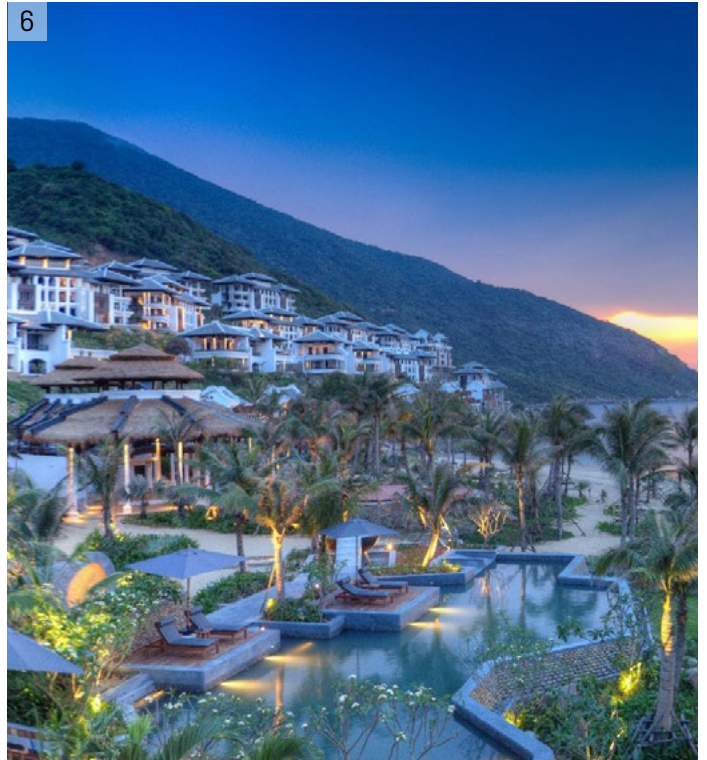
1: NOVOTEL DANANG PRIMER HAN RIVER/ DA NANG CITY

2: PULLMAN HAI PHONGHOTEL/ HAI PHONG CITY

3: HILTON DA NANG HOTEL/ DA NANG CITY

4: MEDITTERANEO RESORT/ HUE CITY

5-STAR HOTELS



5: HILTON SAIGON/ HO CHI MINH CITY

6: INTERCONTINENTAL DANANG/ DA NANG CITY

7: FLAMINGO HAI TIEN BEACH RESORT/ THANH HOA CITY

8: HILTON HAI PHONG HOTEL/ HAI PHONG CITY

FAMOUS CONSTRUCTIONS



1: VEGA CITY/ NHA TRANG CITY

2: VINHOMES DAI AN/ HUNG YEN PROVINCE

3: GO! SUPERMARKET/ BAC GIANG CITY

4: DANANG FRENCH VILLAGE BANA HILLS/ DA NANG CITY

OFFICES & HOTELS



1: APEC AQUA PARK/ BAC GIANG CITY

2: PARIS HOANG KIM/ HO CHI MINH CITY

3: D' CAPITALE TRAN DUY HUNG/ HA NOI CITY

OFFICES & HOTELS

1



2



3

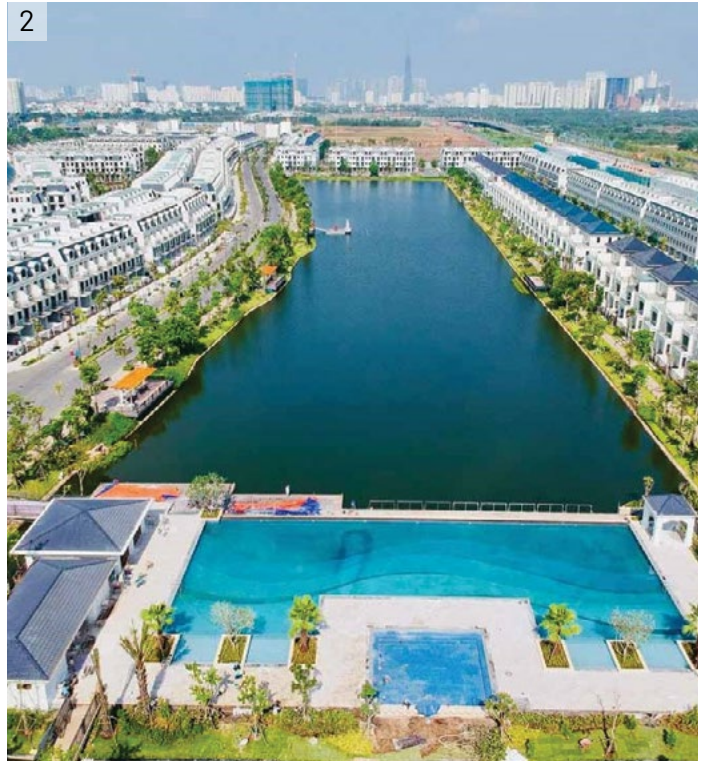


1: THE NEXUS/ HO CHI MINH CITY

2: DEUTSCHES HAUS/ HO CHI MINH CITY

3: DIAMOND CROWN HAI PHONG/ HAI PHONG CITY

VILLAS & TERRACED HOUSES



1: AN VUONG VILLA/ HA NOI CITY

2: LAKE VIEW CITY/ HO CHI MINH CITY

3: APEC GOLDEN VALLEY MUONG LO/ YEN BAI PROVINCE

4: ECOLAKES MY PHUOC/ BINH DUONG PROVINCE

HOSPITALS



1: HANOI FRENCH HOSPITAL/ HA NOI CITY

2: TAM MINH DUC GENERAL HOSPITAL/ TIEN GIANG PROVINCE

3: TRADITIONAL MEDICINE HOSPITAL/ HO CHI MINH CITY

4: CHILDREN HOSPITAL 2/ HO CHI MINH CITY

FACTORIES



1: BAYER FACTORY/ ĐÔNG NAI PROVINCE

2: DP SYSTEMS ELECTRONIC MECHANICAL TECHNOLOGY FACTORY/ BÌNH DƯƠNG PROVINCE

3: KHANG VIET FACTORY/ LONG AN PROVINCE

4: OLAM PEPPER FACTORY/ ĐÔNG NAI PROVINCE

FACTORIES

5



6



7



8



5: CP FEEDMILL FACTORY/ CA MAU CITY

6: VIET NHAT CAR MANUFACTURING FACTORY/ HUNG YEN CITY

7: JOHN RICHARD FACTORY/ BINH DUONG PROVINCE

8: SLP BINH MINH LONG HAU FACTORY/ LONG AN PROVINCE

EDUCATIONAL BUILDINGS



1: FPT UNIVERSITY/ HO CHI MINH CITY

2: NGUYEN VAN TO JUNIOR HIGH SCHOOL/ HO CHI MINH CITY

EDUCATIONAL BUILDINGS

3



4



3: NGUYEN TRUNG TRUC HIGH SCHOOL/ LONG AN PROVINCE



4: HANOI STAR II EDUCATION/ HA NOI CITY

THE PROCESS OF SALES AND AFTER-SALES SERVICES

▶ DURING THE SALES SERVICES

- 1** Provide a comprehensive overview of the company's solution package. 
- 2** Offer specific solutions to each project, recommending suitable systems of paints and construction chemicals. 
- 3** Provide training for contractors, construction units and others. Upon completion, participants will receive our certifications. 
- 4** Support color mixing for construction projects. 

▶ AFTER-SALES SERVICES

- 1** Technical consulting support and project inspection. 
- 2** Product warranty for the project 



TOA

Product Portfolio

INTRODUCTION

With a rich history of establishment and development spanning over 50 years, TOA Group has brought its experience and creativity from Thailand to the Vietnamese market.

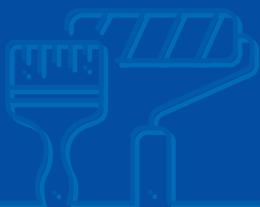
TOA Paint aims to offer comprehensive solutions of paint for constructions projects with a diverse variety of product lines and options. We apply the most advanced technology to ensure the highest quality, exceptional service and competitive price. This approach enables us to effectively meet the growing demands of our customers.



DECORATIVE PAINTS

With more than 50 years of experience, TOA is currently the No.1 paint brand in Thailand and a leading manufacturer of technological coatings in Southeast Asia.

This achievement is attributed to relentless efforts of research and the application of cutting-edge coating technologies to produce high quality products with exceptional features. TOA Paint Vietnam offers a comprehensive range of decorative paint products, catering to diverse user preferences and needs, spanning from ultra-premium to economy segments.





Hi-sheen

Sheen



SUPERSHIELD ULTRA PREMIUM EXTERIOR EMULSION PAINT

- 15 years protection with Titanium Triple Protection technology
 - Self-cleaning technology protects the building with long lasting beauty, cleanness
 - High ability of waterproof and long lasting under UV
- Packing size: 15L - 5L - 1L



Sheen



TOA 7IN1 ULTRA PREMIUM EXTERIOR EMULSION PAINT

- Cover hair-line cracks with 3 times elastomeric
 - Anti dirt pick-up, good waterproofing
 - Maximum coverage
- Packing size: 15L - 5L - 1L



Sheen



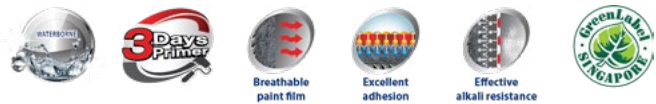
SUPERSHIELD DURACLEAN A+ ULTRA PREMIUM INTERIOR EMULSION PAINT

- Air Detoxify technology - transform formaldehyde in the air into water vapor
 - Anti-bacteria with Microban technology
 - Safe for people with asthma and allergies
- Packing size: 15L - 5L - 1L



SUPERSHIELD SUPER SEALER ULTRA PREMIUM EXTERIOR SEALER

- Premium alkali resistant sealer
 - Excellent adhesion
 - Effective water resistance and efflorescence resistance
- Packing size: 18L - 5L



TOA HYDRO QUICK PRIMER PREMIUM MULTI-PURPOSE PRIMER

- New surfaces dry after 3 days in normal conditions*
 - Excellent adhesion, effective alkali resistance
 - Prevent yellowed surface by alkali
 - For both exterior and interior use
- * Substrate moisture < 30%, pH < 11
- Packing size: 18L - 5L





Hi-sheen

Sheen



TOA NANOSHIELD PREMIUM EXTERIOR EMULSION PAINT

- Water resistance with Hybrid Nano technology
 - Anti dirt pick-up
 - Hybrid Nano & Graphene technology help to protect buildings up to 10 years
- Packing size: 15L - 5L - 1L



TOA NANOSHIELD SEALER PREMIUM EXTERIOR ALKALI RESISTING SEALER

- High adhesion
 - Effective alkali and water resistance
- Packing size: 18L - 5L



TOA GOLD EMULSION & TOA GOLD LACQUER

- Natural sparkling golden paint film
 - Excellent adhesion, good anti-fungus and algae
 - Good weather and UV resistance
- Packing size: 17.5L - 5L - 0.875L



Hi-sheen

Sheen



TOA NANOCLEAN PREMIUM INTERIOR EMULSION PAINT

- Anti bacteria up to 99.9% with Silver Nano technology
 - Stain resistance
 - Odorless and smooth surface
- Packing size: 15L - 5L - 1L



TOA NANOCLEAN PRIMER PREMIUM INTERIOR ALKALI RESISTING PRIMER

- Good adhesion
 - Effective water and efflorescence resistance
- Packing size: 18L - 5L





Hi-sheen

Sheen



TOA THOAI MAI LAU CHUI PREMIUM INTERIOR EMULSION PAINT

- Easy clean with Clean Max Technology
 - Anti bacteria
 - Slight scent of violet flower
 - High coverage, beautiful smooth paint film
- Packing size: 18L - 5L - 1L



*This product is only routed through the project distribution channel



TOA CLEANABLE & ANTIBACTERIAL INTERIOR EMULSION PAINT

- Anti bacteria
 - Easy clean
 - Smooth paint film
 - High coverage
- Packing size: 18L



Sheen

Matt



TOA 4 SEASONS TOP SILK INTERIOR EMULSION PAINT

- Easy clean
 - Anti bacteria
 - Long lasting color
 - Anti fungus
- Packing size: 18L - 5L - 1L



TOA 4 SEASONS SEALER EXTERIOR ALKALI RESISTING SEALER

- Alkali resistance
 - Good adhesion
 - Effective efflorescence resistance
 - No added formaldehyde, lead, mercury
- Packing size: 18L - 5L



Hi-sheen

Sheen



TOA 4 SEASONS SATIN GLO EXTERIOR EMULSION PAINT

- Anti color fading 2 times for hisheen finishing film
 - Anti dirt pick-up
 - Durable to weather
 - Anti UV
- Packing size: 18L - 5L - 1L



Matt



TOA 4 SEASONS TROPIC SHIELD INTERIOR EMULSION PAINT

- Anti color fading
 - Anti dirt pick-up
 - Chalking resistance
 - Anti fungus and algae
- Packing size: 18L - 5L - 1L



SUPERTECH PRO EXTERIOR EXTERIOR EMULSION PAINT

- Extra UV protection
 - High coverage, good adhesion
 - Anti fungus
 - Long lasting color
- Packing size: 18L - 5L



SUPERTECH PRO INTERIOR INTERIOR EMULSION PAINT

- High coverage, good adhesion
 - Enhanced anti-mold
 - Beautiful paint film
- Packing size: 18L - 5L



SUPERTECH PRO SUPER WHITE INTERIOR INTERIOR EMULSION PAINT

- High coverage, good adhesion
 - Enhanced anti-mold
 - Beautiful paint film
- Packing size: 18L - 5L



SUPERTECH PRO SEALER EXTERIOR ALKALI RESISTING SEALER

- Alkali resistance
 - Anti fungus
 - Good adhesion
- Packing size: 18L - 5L



SUPERTECH PRO PRIMER INTERIOR ALKALI RESISTING PRIMER

- Alkali resistance
 - High coverage
 - Good adhesion
- Packing size: 18L - 5L



HOMECOTE INTERIOR INTERIOR EMULSION PAINT

- High coverage, good adhesion
 - Anti fungus
 - No added lead & mercury
- Packing size: 17L - 5L



HOMECOTE PRIMER INTERIOR ALKALI RESISTING PRIMER

- Alkali resistance
 - High coverage
 - Good adhesion
- Packing size: 18L

**This product is only routed through the project distribution channel*



NITTO EXTRA INTERIOR EMULSION PAINT

- Smooth and beautiful finishing film
 - Good adhesion
 - Easy application and cost-saving
- Packing size: 17L - 4L



Easy application

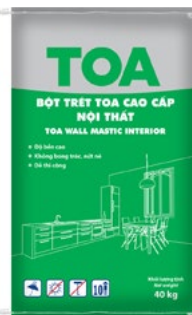


Good adhesion



TOA PRO PUTTY

- Good adhesion
 - Covering surface defects effectively
 - Easy application
 - High quality
- Packing size: 25kg



Easy application



Good adhesion



TOA WALL MASTIC EXTERIOR/INTERIOR

- Protect wall with long lasting durability
 - Non-flacking, non-cracking
 - Fungus and algae resistance
 - Stand up to severe weather condition
 - Easy application
- Packing size: 40kg



Easy application



Good adhesion

SUPERTECH PRO PUTTY EXTERIOR/INTERIOR

- Making smooth surface
 - Non-flacking, non-cracking
 - Fungus and algae resistance
 - Stand up to severe weather condition
- Packing size: 40kg



Easy application

HOMECOTE WALL PUTTY INTERIOR & EXTERIOR/INTERIOR

- Used for both interior and exterior wall
 - Making smooth surface
 - Easy sanding
 - Economical
- Packing size: 40kg



MANDARIN DUCK - ALKYD HIGH GLOSS ENAMEL PAINT

- High coverage
- Anti fungus
- Glossy surface
- Beautiful colors

Packing size: 17.5L - 3L - 0.8L - 0.375L



MANDARIN DUCK QUICK DRYING RED OXIDE PRIMER

- Quick drying
- High coverage
- Good adhesion
- No added lead & mercury

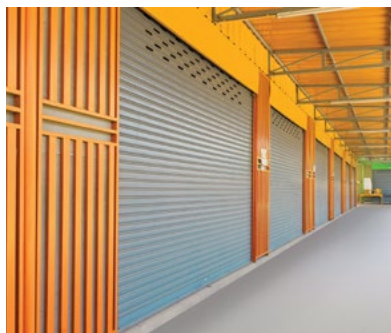
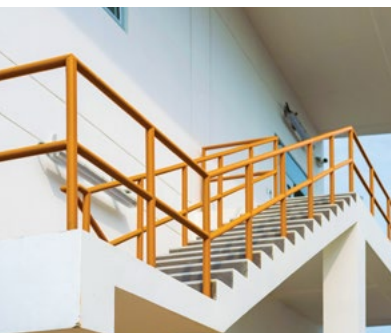
Packing size: 17.5L - 3L - 0.8L



MANDARIN DUCK QUICK DRYING GREY OXIDE PRIMER

- Quick drying
- High coverage
- Good adhesion
- No added lead & mercury

Packing size: 17.5L - 3L - 0.8L



HEMOCOTE - ALKYD HIGH GLOSS ENAMEL PAINT

- High coverage
- Anti fungus
- Glossy surface
- Beautiful colors

Packing size: 17.5L - 3L - 0.8L - 0.375L



HEMOCOTE QUICK DRYING RED OXIDE PRIMER

- Quick drying
- High coverage
- Good adhesion
- No added lead & mercury

Packing size: 17.5L - 3L - 0.8L



HEMOCOTE QUICK DRYING GREY OXIDE PRIMER

- Quick drying
- High coverage
- Good adhesion
- No added lead & mercury

Packing size: 17.5L - 3L - 0.8L



Excellent adhesion Quick drying

WIN - KOBE SPRAY

- Quick drying
 - High gloss
 - Beautiful colors
 - Good adhesion
- Packing size: 0.4L



TOA SUPREME - PREMIUM ABRASIVE PAPER

- Superior cutting and sanding efficiency
 - Excellent flexible and toughness backing paper
 - Anti-slip backing paper and Anti-clogging
 - Long lasting sanding ability
- Packing size: 50 sheets/sleeve; 100 sheets/sleeve



TOA TLCC

- High performance cutting and sanding ability
 - Excellent flexible and toughness backing paper
 - Anti-slip backing paper
 - Long lasting sanding ability
- Packing size: 50 sheets/sleeve; 100 sheets/sleeve



TOA D-CUT

- High performance stearate coating
 - Superior grain support
 - Provide high quality finishing surface
 - Good for contour surface sanding toughness and flexible
- Packing size: 100 sheets/sleeve



TOA PUTTY SANDER (WACS)

- High sanding performance (for the plaster surface)
 - High durability
 - Less dust/residue on the surface of sandpaper
 - Apply to dry grinding plaster surfaces and wood surfaces
- Packing size: 50 sheets/sleeve



TOA 2 IN 1

- Primer & Topcoat in one
 - Excellent adhesion
 - Quick drying
 - Good hardness
 - Not using chromium, lead and mercury
- Packing size: 17.5L – 3Kg – 0.8Kg – 0.375Kg



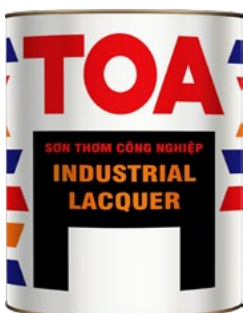
SHARK EPOXY PRIMER

- Good adhesion
 - High coverage
 - Quick drying
 - Rust prevention
- Packing size: 1L: Part A: 0,75L | Part B: 0,25L
 4L: Part A: 3L | Part B: 1L
 16L: Part A: 12L | Part B: 4L



TOA T-8000

- High gloss
 - Quick drying
 - Protect wood surface
 - Good adhesion
- Packing size: 3.5L, 0.85L



TOA INDUSTRIAL LACQUER

- Quick drying
 - Excellent adhesion
 - Beautiful color
- Packing size: 17.5L – 0.875L

RECOMMENDED PAINT SYSTEM



Customer support services:

- Recommend the best and most suitable paint system.
- Estimate paint volume needed for the whole project.
- Instructions on construction techniques, measuring moisture before construction.
- Idea color consultation - color matching according to the latest trends.

EXTERIOR PAINTS

Putty



Primer



Topcoat

TOA Pro Putty



Or

TOA Wall Mastic Exterior



SuperShield Super Sealer



SuperShield



TOA 7IN1



TOA Wall Mastic Exterior



TOA NanoShield Sealer



TOA NanoShield



TOA 4 Seasons



TOA 4 Seasons Satin Glo,
TOA 4 Seasons Tropic Shield



Homecote Wall Putty Interior & Exterior



Supertech Pro Sealer



Supertech Pro Exterior



INTERIOR PAINTS

Putty



Primer



Topcoat

TOA Wall Mastic Interior



SuperShield Super Sealer



SuperShield DuraClean A+



TOA NanoClean Primer

TOA NanoClean Primer



TOA NanoClean



TOA Thoai Mai Lau Chui



TOA 4 Seasons Sealer



TOA 4 Seasons Top Silk



Homecote Wall Putty Interior



Supertech Pro Primer



Supertech Pro Interior/
Supertech Pro Super White Interior



Homecote Interior



Nitto Extra



SPECIAL PAINTS

Putty >

Primer >

Topcoat

TOA Wall Mastic Exterior



SuperShield Super Sealer



TOA Gold Emulsion



TOA Gold Lacquer (P700)



TOA Gold Lacquer



SPECIALIZED PRIMERS

TOA Extra Wet Primer



TOA Hydro Quick Primer



WATERPROOFING AGENTS

TOA Waterblock Color



TOA 258 Cement Membrane



TOA PU WATERPROOF



TOA Chong Tham Da Nang



TOA 268 Cement Membrane



TOA 201 Roofseal



TOA Weatherkote No.3



TOA Floorseal



TOA Roofseal Sun Block



ENAMEL PAINTS

Mandarin Duck & Homecote Quick Drying Red / Grey Oxide Primer



Mandarin Duck - Alkyd High Gloss Enamel Paint & Homecote - Alkyd High Gloss Enamel Paint



OTHER PAINTS

TOA 2 trong 1



KOBE Spray



WIN Spray

Shark epoxy Primer





**SOLUTIONS
BUILDER**

Innovative Construction Chemicals

COMPREHENSIVE CONSTRUCTION PROTECTION SOLUTIONS



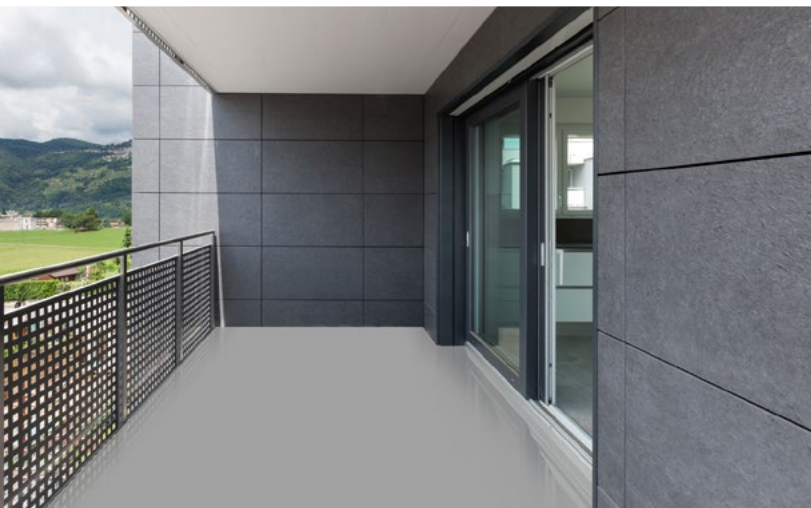


CONSTRUCTION CHEMICALS

In addition to providing advanced technology paint products, TOA Paint Vietnam has also conducted research and produced a high-quality line of construction chemicals. These provide well-rounded protection solutions for various civil works. Many project investors and customers nationwide have placed their trust in TOA Construction Chemicals since its official launch in early 2022.



WATERPROOFING





Liquid-applied polyurethane waterproofing membrane system

TOA 555 PU WATERPROOFING*

*This product is only routed through the project distribution channel

- Elastomeric waterproofing membrane with high elongation, excellent crack bridging properties.
- A cold liquid applied with high-solids polyurethane can be applied seamlessly without layer separation.
- Single component, easy application on vertical and horizontal surfaces.
- Excellent adhesion to concrete or cementitious substrates.
- Excellent chemical corrosion resistance. Low temperature flexibility, wide service temperature, suitable for all climates.

Area of use:

Exterior concrete.
Above grade between two courses of concrete or masonry and cavity walls. Balconies, planter boxes & parking garages.
Waterproofing for roofs with proper protective coatings.

Package: 25 Kg

Color: Black



Polyurethane waterproofing for decks and roofs

TOA PU WATERPROOF

- Single component of water based polyurethane.
- Highly flexible, elongation up to 600%.
- 100% waterproof seamless layer.
- Prevent leaks and solve cracks on concrete caused by rapid changes in temperature.
- Good UV resistance, harsh weather tolerance and abrasion resistance from traffic.

Area of use:

Concrete roofs, decks, terraces, balconies and wet areas, asbestos roof tiles.

Consumption: 2 Kg/m²
(1 sealer + 3 top coats)

Package: 20 Kg, 4 Kg

Color: Grey, white, green



Acrylic waterproofing for decks and roofs

TOA 201 ROOFSEAL

- High flexibility with 5 times elongation.
- 100% waterproof seamless layer.
- Prevent leaks and solve cracks on concrete caused by rapid changes in temperature.
- UV resistance, harsh weather tolerance and abrasion resistance from traffic.
- Non-toxic, no added mercury and lead.

Area of use:

Concrete roofs, decks, terraces, balconies, concrete and brick wall cladding, gutter concrete, asbestos roof tiles, metal sheet roofs.

Consumption: 1 Kg/m²
(1 sealer + 2 - 3 top coats)

Package: 20 Kg, 4 Kg

Color: Grey, white, green, brown, dark blue



Acrylic waterproofing for decks and roofs with solar reflectance property

TOA ROOFSEAL SUN BLOCK

- Reflect over 95% of the sun heat.
- High flexibility, over 500% elongation.
- 100% waterproof seamless layer.
- Prevent leaks and solve cracks on concrete caused by rapid changes in temperature.
- UV resistance, harsh weather tolerance and abrasion resistance for traffic.
- Non-toxic, no Mercury and lead.

Area of use:

Concrete roofs, decks, terraces, balconies, concrete and brick wall cladding, a gutter concrete, asbestos roof tiles, metal sheet roofs.

Consumption: 1 Kg/m²
(1 sealer + 2 - 3 top coats)

Package: 20 Kg, 4 Kg

Color: Grey, white, green, cream



A self-adhesive butyl rubber sealing tape with a strengthened aluminum backing

TOA SMART TAPESEAL

- High self-adhesive, easy to apply.
- Prevent and fix leakage problems.
- Excellent adhesion to most construction materials and coated.
- High durability, UV resistance, withstand high heat and cold.
- Bitumen free, environmentally friendly.
- Water based paintable aluminum foil surface.

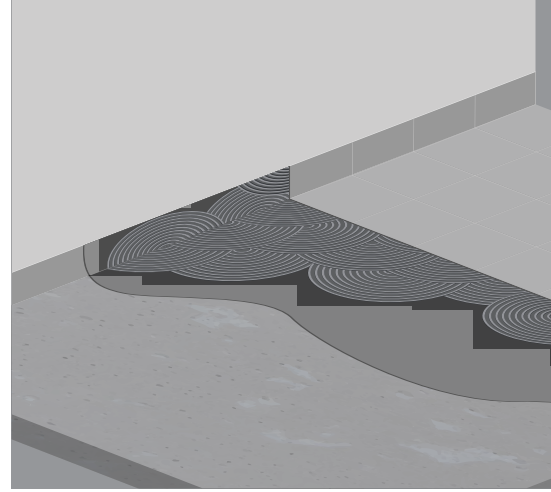
Area of use:

Roofs, building cracks, gutters, PVC water pipe.

Package: 3 m x 30 cm

3 m x 20 cm

3 m x 10 cm



Special SBR modified polymer, designed to possess waterproofing properties

TOA WATER BLOC

- Resistant to waterlogging.
- Higher flexibility with 1000% elongation.
- High adhesion with the surface and cement glue when putting tiles.
- Applying a top coat without the need for primer.
- Applying adhesive to old tiles to prevent leaking before putting in new tiles.
- Non-toxic.

Area of use:

Bathroom floors, decks, balconies, basements, swimming pools.

Consumption: 1 Kg/m² (2 coats)

Package: 20 Kg, 4 Kg

Color: White



Cement waterproofing for concrete floors

TOA FLOORSEAL

- Effective waterproofing.
- Very good adhesion on firm substrates.
- Quick drying.
- Sealing static hair-line cracks that are lower than 0.1mm.
- For interior & exterior.

Area of use:

Concrete floors, decks, balconies and wet areas.

Consumption: 5 - 7 m²/kg/coat

Package: 20 Kg, 4 Kg

Color: Grey (after mixing with cement)



Polymer-modified cementitious two component waterproofing

TOA 258 CEMENT MEMBRANE TOA 268 CEMENT MEMBRANE *

**This product is only routed through the project distribution channel*

- Create a seamless waterproof membrane, no joints.
- Packed in convenient mixing ratio for easy mixing and application.
- Improved polymer composition increases good adhesion on surfaces.
- Capable of covering cracks ≤ 0.5 mm (TOA 258 Cement Membrane) and ≤ 2 mm (TOA 268 Cement Membrane)
- The product is non-toxic, can be applied to surfaces in contact with residential water.

Area of use:

Mortar, concrete substrate with proper topcoat protection: floors, walls, bathrooms, kitchen areas, terraces, balconies, loggia, residential water tanks, swimming pools, Internal concrete of residential water tanks,...

Consumption: 2 Kg (+/- 0.2 Kg)/m² (2 coats)

Package:

TOA 258 Cement Membrane:

- Set 20 Kg (part A: 5 Kg + part B: 15 Kg)

TOA 268 Cement Membrane:

- Set 25 Kg (part A: 10 Kg + part B: 15 Kg)
- Set 40 Kg (part A: 16 Kg + part B: 24 Kg)



Cement waterproofing for walls

TOA CHONG THAM DA NANG

- Double waterproofing effect.
- Easily vapor-permeable film.
- For interior & exterior.
- Alkali and fungus resistance.

Area of use:

Concrete and cement surfaces, for exterior & interior.

Consumption: 4 - 5 m²/kg/coat

Package: 20 Kg, 4 Kg, 1 Kg

Color: Grey (after mixing with cement)



Color waterproofing for walls

TOA WATERBLOCK COLOR

- Excellent waterproofing ability with Hydro Block Power technology.
- Good adhesion, no peeling off.
- Alkali, fungus and algae resistance.
- Can seal small cracks because of its high elongation.
- Lead, mercury, and formaldehyde aren't used in the manufacturing process.
- Plenty of colors (base A).

Area of use:

New and previously painted vertical surfaces such as concrete, mortar, cement plaster, bricks.

Consumption: 6.3 - 7.3 m²/Lit/coat

Package: 20 Kg, 6 Kg

Color: Refer to TOA Waterblock Color cataloguement)



Bituminous waterproofing coating

TOA WEATHERKOTE NO.3

- It forms a black bitumen film that is sustainable, flexible, and has no sagging.
- Waterproofing.
- Fungus and rust prevention.

Area of use:

Waterproofing for roofs, gutters, kitchens, toilet areas and other concrete structures,...

Prevent chassis, metal structures, and roofing from rusting.

Consumption: 2 m²/Li/coat

Package: 18 Kg, 3.5 Kg, 1 Kg

Color: Black



Pre-applied, fully bonded HDPE waterproofing membrane, with UV resistance for subterranean structures

TOA 1200 PWM/TOA 1200 PWM-P (HDPE) * TOA 1500 TPO - PWM *

*This product is only routed through the project distribution channel

- Easy application.
- Strong adhesion after concrete sets which helps prevent water infiltration between concrete and membrane.
- Good chemical resistance.
- Suitable for construction conditions in underground areas.
- Suitable for use in field conditions. Weather-resistant due to its high elasticity.

Area of use:

Used as a waterproof membrane for applications in basement structures, retaining walls under high water pressure.

Package: 20 m x 1 m

Color: White



Self-adhesive bituminous waterproofing membrane

TOA 1500 BTS SELF-ADHESIVE

- Self-adhesive membrane and no special tools required makes application easily, fast and safe.
- Excellent adhesion on the entire surface, both initial and long-term.
- Good crack bridging property as well as tear and puncture resistance.
- Excellent resistance to chemical corrosion.
- Good as water and moisture barrier.

Area of use:

Foundation, exterior retaining walls, exterior walls of underground sewage treatment plants or water tanks. Can be used for horizontal and vertical surface applications for underground facilities, subways, tunnels,...

Package: 20 m x 1 m

Color: Black



Waterbar for joint sealings

TOA HYDROSWELL BAR

- Waterproof joints where an opening of up to 5mm.
- Seal joint which has water pressure of up to 6 bar.
- Can profile itself exactly into the joint, filling all cavities and effectively stopping water seepage, even at high external water pressure.

Area of use:

Is suitable for all construction joints subject to hydrostatic pressure, on one or both sides.

Package: 6.25 m x 20 mm x 15 mm

Color: Black



Chemical coating (gloss) for moisture barrier, mold, and algae prevention

TOA 100 WATER REPELLENT GLOSS

- Excellent gloss substrates and prevent stains well.
- Effective in waterproofing.
- Protect mold and algae on the surface substrate.
- Maintain the surface substrate so it can be used longer.
- UV and weather resistance.

Area of use:

Facades and exposed concrete, sandstones, slate stones, washed sands, natural stones and bricks, potteries, sculptures,... needed to prevent mould and algae.

Package: 1 Gallon, 1/4 Gallon



Water repellent for moisture barrier, mold, and algae prevention

TOA 213 WATER REPELLENT (WB) - WATER-BASED TOA 214 WATER REPELLENT (SB) - SOLVENT-BASED

- Prevent moisture on surfaces, which will facilitate algae, mold, and mildew growth.
- Prevent dirt pick-up, make surfaces easier to clean, and keep surfaces always looking new.
- Prevent soluble salt booming.
- Non-yellowing, no visible change on the substrates.

Area of use:

Facades and exposed concrete, washed sands, pavements, natural stones,... needed to prevent mould and algae.

Package: 1 Gallon, 1/4 Gallon



Special chemical used for killing mold and algae

TOA 113 MICROKILL

- Can kill the algae, mold, and fungi that caused the healthy problem and made it difficult to clean the surfaces.
- It does not smell pungent, and TOA 113 Microkill is environmentally friendly.
- No mercury or lead.
- Good penetration into the substrate.
- Protect the substrate for a longer time.

Area of use:

Building walls, concrete decks, bricklayers, marble renders or areas needed to kill mould and algae.

Package: 5 Lit



Special primer developed to protect moisture from rising damp

TOA MOISTURE GUARD

- Water-based modified Xylocaine with high moisture protection.
- High penetration into the surface.
- Enhancing the adhesion of primer and reducing alkalinity on the new surface and top coat.
- Suitable for the bottom part of the outside wall: High potential of rising damp moisture.

Area of use:

Protect moisture in rising damp areas by building walls close to the ground or brick, natural stones, washed sands, and concrete.

Package: 5 Lit



SEALANT



One component, self-expanding polyurethane foam

TOA PU FOAM

- Excellent adhesion on most substrates (except PE, PP and PTFE).
- High thermal and acoustical insulation.
- Very good filling capacities.
- Excellent mounting capacities.
- Excellent stability (no shrinkage or post-expansion).

Area of use:

Window and door frames, filling of cavities, sealing of all openings in roof constructions, creation of a soundproof screen, connecting of insulation materials and roof constructions, application of a soundproofing layer on motors.

Package: 750 ML, 500 ML

Color: Cream



Acrylic used for filling small cracks

TOA ACRYLIC FILLER

- White acrylic flexible filler does not leave a yellowish greasy stain on the surface.
- Used for filling small cracks of 2 mm width.
- Fast drying, non-shrinking, and easy to sand.

Area of use:

Filling small cracks on plastered walls, nail holes, gypsum seams, tiles, and wood.

Package: 1 Gallon, 1/4 Gallon, 1/8 Gallon

Color: White



One component, flexible acrylic used for filling large cracks

TOA 302 ACRYLIC SEALANT

- Used for filling large cracks 2 to 10 mm in diameter that have movement.
- Be able to bond well with surfaces that are made of cement, concrete, tiles, and wood.
- Easy to sand.
- High durability, resistant to UV light, not leaving a yellowish greasy stain on the surface.
- Paintable.

Area of use:

Filling cracks that have movement, such as door and window frames, tiles, and wood. Repairing cracks in plastered walls.

Package: 4 Kg, 1 Kg

Color: White



TOA 303 ACRYLIC SEALANT

- Used for filling large cracks 2 to 10 mm in diameter that have movement.
- Be able to bond well with surfaces that are made of cement, concrete, tiles, and wood.
- Easy to sand.
- High durability, resistant to UV light, not leaving a yellowish greasy stain on the surface.
- Paintable.

One component, flexible acrylic used for filling large cracks

Area of use:

Filling cracks that have movement, such as door and window frames, tiles, and wood. Repairing cracks in plastered walls.

Package: 280 ML

Color: White



TOA SILICONE SEALANT (GP, HP)

- TOA Silicone Sealant GP: acetic cure silicone elastomer
- TOA Silicone HP: 100% silicone elastomer
- High elasticity and room temperature cure.
- Good adhesion to many substrates.
- High durability, resistant to UV light.
- Excellent workability, non-sagging.

One component, silicone sealant

Area of use:

Joint sealant between glass and door, wood and PVC window. TOA Silicone Sealant HP can be used on concrete surfaces.

Package: 280 ML

Color: White, clear, grey, black



TOA PU SEALANT

- Strong adhesion on most common construction materials such as concrete, aluminum and wood.
- Excellent workability, not leaving stains on the surface.
- Elongation is over 600%.
- High UV resistance.
- Paintable.

One component, polyurethane sealant

Area of use:

Precast and expansion joints
Wall and floor joints
Doors and windows frame
Sealing joints in facades, metal construction
Sealing roof tiles and ceramic tiles

Package: 600 ML, 310 ML

Color: White, grey



TOA FAST BOND

- Fast drying, easy to install
- Bond to a wide range of substrates such as wood, glass and concrete.
- High resistance to weather conditions such as UV radiation, vibration, moisture and ozone.
- Can be used with polystyrene foam and mirrors.
- Can be used both inside and outside.

Versatile general-purpose construction adhesive suitable for bonding a wide variety of building materials

Area of use:

Skirting boards and trims to walls. Stick to wall panels and floor panels as a contact adhesive for the installation of wall and floor panels. Metal, timber, or other sheets of materials to concrete, plaster, or other rigid surfaces.

Package: 300 ML

Color: Beige



TILE ADHESIVE & TILE GROUT



Premium narrow tile grout for preventing mould

TOA PREMIUM GROUT PLUS

- Inhibits the growth of bacteria, mold and fungi
- High bonding, no shrink
- For grouting gaps from 0.2 to 3 mm width
- Suitable for floors and walls, interior and exterior

Area of use:

Common and ceramic tiles, granite tiles, granites, marbles, mosaics.

Consumption: 1 Kg/6 m² (for tiles 20 x 20 cm, and joint width 2 mm).

Package: 1 Kg

Color: White, grey, cream, black, blue



Premium tile grout for preventing mould

TOA PREMIUM GROUT

- Inhibits the growth of bacteria, mold and fungi
- High bonding, no shrink
- For grouting gaps from 1 to 6 mm width
- Suitable for floors and walls, interior and exterior

Area of use:

Bricks, concrete blocks, lightweight concrete block layering and plastering.

Consumption: 1 Kg/4 m² (for tiles 20 x 20 cm, and joint width 3 mm).

Package: 1 Kg

Color: White, grey, cream, dark blue, light blue





TOA PROTILE

- Finished mix from the factory. The quality is consistent.
- Easy to use.
- Good adhesive.
- Ceramic tiles up to 60x60 cm.
- Suitable for floors and walls, interior and exterior.
- Tile can be adjusted within 15 minutes.

Area of use:

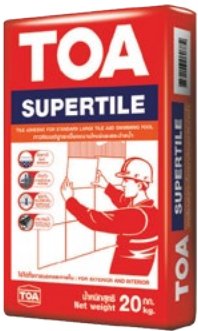
Clay tiles, granito tiles, mosaic tiles.

Consumption: 20 Kg/4 m²

Package: 20 Kg

Color: Grey

Standard performance
cementitious, one component,
tiling adhesive mortar



TOA SUPERTILE

- Finished mix from the factory. The quality is consistent.
- Easy to use.
- Good adhesive.
- Ceramic tiles up to 60x60 cm.
- Suitable for floors and walls, interior and exterior.
- Tile can be adjusted within 15 minutes.

Area of use:

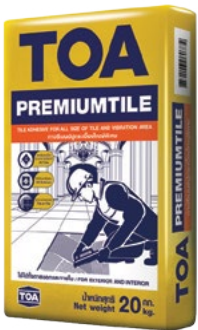
Clay tiles, granito tiles, mosaic tiles,
ceramic tiles (for swimming pools),
marbles, granites

Consumption: 20 Kg/4 m²

Package: 20 Kg

Color: Grey

High performance
cementitious, one component,
tiling adhesive mortar



TOA PREMIUMTILE

- Finished mix from the factory. The quality is consistent.
- Easy to use.
- Good adhesive.
- Laying tiles on both internal and external existing tiles.
- Resist all weather conditions and vibrations.
- Suitable for floors and walls, interior and exterior.
- Tiles can be adjusted within 20 minutes after application.

Area of use:

All types of tiles and stones, tile on
tile, heavy duty areas, immersed
areas such as swimming pools.

Types of substrate: concrete,
mortar, fiber cement, plywood

Consumption: 20 Kg/4 m²

Package: 20 Kg

Color: Grey

High performance thin layer,
flexible cementitious, tiling
adhesive mortar



TOA GROUT GP

- High compressive strength more than 700 ksc.
- Good flowability, no bleeding, no segregation.
- Non-toxic, non-corrosive.
- Impact resistant.
- Ready to use.

Area of use:

Machine foundations, rail beds,
columns in precast constructions,
anchor bolts, bridge bearings,
cavities, gaps, recesses.

Package: 25 Kg

Color: Grey

High strength non-shrink grout



ADMIXTURE



Admixture used for increasing air entrainment in mortar, resulting in easy plastering, brick laying, and non-crack

TOA MORTARPLAST

- Improve workability.
- Improve durability.
- Increase cohesion in brick layers.
- Result in easy plastering, bricklaying, and non-cracking.
- Time and cost savings.

Area of use:

Bricklaying, mass concrete structures, dams and reservoirs, runways and taxiways.

Package: 25 Kg, 5 Kg



Admixture used for mixing with concrete or mortar for waterproofing

TOA WATERPROOF ADMIXTURE

- Waterproofing & increasing concrete rigidity.
- Enhancing workability without increasing water volume.
- Reducing shrinking rate when drying & reducing crack problems.

Area of use:

Waterproofing of masonry and concrete structures such as water tanks, swimming pools, bathrooms, dams, reservoirs, tunnels, basements.

Package: 25 Kg, 5 Kg



Concrete bonding and waterproofing admixture

TOA LATEX AGENT

- Reduce shrinkage and cracks.
- Strengthening adhesion of old and new concrete.
- Increase chemical and abrasion resistance.
- Excellent water resistance.
- Suitable for cement mortar layers in contact with residential water.
- No added APEO, formaldehyde, mercury, lead and low VOC.

Area of use:

Used to increase the qualities of cement mortar such as: concrete repair mortar, masonry mortar, tile fixing mortar, thin patching mortar, floor screeds.

Package: 25 Lit, 5 Lit, 2 Lit



ACCESSORIES



Reinforcing mesh used for strengthening of the waterproofing system

TOA FIBER MESH

- To enhance tensile strength.
- To enhance crack bridging performance.
- To prevent the expansion of cracks.
- Extend the life of the waterproofing system.

Area of use:

Cracks in the area and corners between the wall and the floor.

Package: 10 m x 1 m

10 m x 8 inch



TOA

HEAVY GUARD





PROTECTIVE COATINGS

Based on the statistics from NACE (National Association of Paint Engineers - USA), up to 75% of paint systems fail before their expected lifespan, mostly because of inadequate surface preparation and incomplete paint application that does not fully or partially adhere to technical requirements.

In order to address and mitigate these concerns, the technical experts at TOA Paint Vietnam have introduced customers to high quality protective coatings that fulfill unique technical standards for a variety of projects. These products are specifically designed to protect the surface of objects materials, offering resistance against temperature, chemicals or corrosion, helping to prolong the lifespan and provide optimal protection of structural materials and industrial buildings.





EPOGUARD PRIMER

- Good adhesion
- Rust prevention
- Good abrasion resistance

Packing size: 19.6L (Part A: 16.8L - Part B: 2.8L)
4.9L (Part A: 4.2L - Part B: 0.7L)



RUSTTECH

- High solid content
- Excellent adhesion
- Rust prevention
- Good abrasion resistance

Packing size: 20L (Part A: 16L - Part B: 4L)



EPOGUARD W

- Excellent adhesion, toughness,
- Excellent Impact resistance, abrasion resistance
- Resistance to sea water, water and high resistance to cathodic protection
- Comply with AWWA C 210 and TIS 1048-2551 for use in pipeline transporting drinking water.

Packing size: 5 Gallon (Part A: 4 Gallon - Part B: 1 Gallon)



EPOGUARD VARNISH

- Good adhesion
 - Excellent penetration
 - Abrasion resistance, resistance to water
 - Mild chemical resistance
- Packing size: 20L (Part A: 16L - Part B: 4L)
5L (Part A: 4L - Part B: 1L)



EPOGUARD ENAMEL

- Excellent chemical and abrasion resistance
 - Excellent durability
 - High gloss
 - Excellent adhesion
- Packing size: 20L (Part A: 16L - Part B: 4L)
5L (Part A: 4L - Part B: 1L)



TOPGUARD

- Excellent chemical and abrasion resistance
 - Excellent durability
 - High gloss
 - Excellent adhesion
 - UV resistance
- Packing size: 20L (Part A: 16L - Part B: 4L)
5L (Part A: 4L - Part B: 1L)



COAL TAR EPOXY 111

- Rust preventing coal tar epoxy for protective coating of tank interior, concrete, steel and underwater area.
 - Excellent to chemical resistance, salt water, crude oil and dilute acids.
- Packing size: 5 Gallon (Part A: 4 Gallon - Part B: 1 Gallon)



EPOGUARD QD PRIMER

- Used as a Primer and/or Intermediate
 - High solid, can be applied at high film build
 - High adhesion
 - Tolerance to abrasion
- Packing size: 20L (Part A: 15L - Part B: 5L)

RECOMMENDED PAINT SYSTEM

TOA Paint proud to have wide range of protective coatings used to protect steel structures, tanks, pipes, industrial buildings, factories, chemical plants, beverage and food processing plants.



SURFACE PREPARATION

Substrate	Minimum Preparation Grade (If not otherwise specified)	First layer of coating system
Carbon steel structures Grade A,B,C or D according ISO 8501-1:2007	Blast cleaning min to Sa2 1/2 according ISO 8501-1; Medium profiles (G) according ISO 8503-1	Zn(R) Primer
	Blast cleaning min to Sa2 1/2 according ISO 8501-1; Addition information should be given in the TDS	Miscellaneous primer

COATING SYSTEM FOR CARBON STEEL STRUCTURES- ENVIRONMENT CORROSION CATEGORY C2

System No.	Primer Coat			Intermediate & finish coats				Coating system			Durability (Years to mayor first maintenance)			
	Products	Type of Primer	No. Of Coat	Normal DFT (µm)	Products	Type of Primer	No. Of Coat	Normal DFT (µm)	Total DFT(µm)	No. Of Coat	Low (up to 7 years)	Medium (7 years -15 years)	High (15 years -25 years)	Very High (More than 25 years)
C2.01	Mandarin Duck Quick Drying Primer	Alkyd	1	40	Mandarin Duck Alkyd Enamel	Alkyd	1	40	80	2	x			
C2.02	Mandarin Duck Quick Drying Primer	Alkyd	1	40	Mandarin Duck Alkyd Enamel	Alkyd	2	30	100	3		x		
C2.03	Mandarin Duck Quick Drying Primer	Alkyd	2	40	Mandarin Duck Alkyd Enamel	Alkyd	2	40	160	4			x	
C2.04	Mandarin Duck Quick Drying Primer	Alkyd	2	40	Mandarin Duck Alkyd Enamel	Alkyd	3	40	200	5				x
C2.05	Epoguard Primer	Epoxy	1	60	Epoguard Enamel	Epoxy	1	60	120	2			x	
C2.06	Epoguard Primer	Epoxy	1	60	Epoguard Enamel	Epoxy	2	60	180	3				x

COATING SYSTEM FOR CARBON STEEL STRUCTURES- ENVIRONMENT CORROSION CATEGORY C3

System No.	Primer Coat			Intermediate & finish coats			Coating system		Durability (Years to mayor first maintenance)					
	Products	Type of Primer	No. Of Coat	Normal DF (µm)	Products	Type of Primer	No. Of Coat	Normal DF (µm)	Total DFT (µm)	No. Of Coat	Low (up to 7 years)	Medium (7 years -15 years)	High (15 years -25 years)	Very High (More than 25 years)
C3.01	Mandarin Duck Quick Drying Primer	Alkyd	1	40	Mandarin Duck Quick Drying Primer	Alkyd	2	30	100	3	x			
C3.02	Mandarin Duck Quick Drying Primer	Alkyd	2	40	Mandarin Duck Quick Drying Primer	Alkyd	2	40	160	4		x		
C3.03	Mandarin Duck Quick Drying Primer	Alkyd	3	40	Mandarin Duck Quick Drying Primer	Alkyd	2	40	200	5			x	
C3.04	Mandarin Duck Quick Drying Primer	Alkyd	2	50	Mandarin Duck Quick Drying Primer	Alkyd	4	40	260	6				x
C3.05	Epoguard Primer	Epoxy	1	60	Epoguard Enamel	Epoxy	1	60	120	2		x		
C3.05	Epoguard Primer	Epoxy	1	60	Topguard	PU	1	60	120	2		x		
C3.06	Epoguard Primer	Epoxy	1	60	Epoguard Enamel	Epoxy	2	60	180	3			x	
C3.06	Epoguard Primer	Epoxy	1	60	Topguard	PU	2	60	180	3			x	
C3.07	Rusttech	Epoxy	1	120	Epoguard Enamel	Epoxy	2	60	240	3				x
C3.07	Rusttech	Epoxy	1	120	Topguard	PU	2	60	240	3				x
C3.07	Epozinc HB	Epoxy	1	80	Topguard	PU	2	60	200	3				x

COATING SYSTEM FOR CARBON STEEL STRUCTURES- ENVIRONMENT CORROSION CATEGORY C4

System No.	Primer Coat				Intermediate coats				Intermediate & finish coats				Coating system				Durability (Years to mayor first maintenance)			
	Products	Type of Primer	No. Of Coat	Normal DF (µm)	Products	Type of Primer	No. Of Coat	Normal DF (µm)	Sản phẩm	Phân loại	Số lớp	Normal DF (µm)	Total DFT (µm)	No. Of Coat	Low (up to 7 years)	Medium (7 years -15 years)	High (15 years -25 years)	Very High (More than 25 years)		
C4.01	Mandarin Duck Quick Drying Primer	Alkyd	2	40					Mandarin Duck Quick Drying Primer	Alkyd	2	40	160	4	x					
C4.02	Mandarin Duck Quick Drying Primer	Alkyd	2	40				Mandarin Duck Quick Drying Primer	Alkyd	3	40	200	5			x				
C4.03	Mandarin Duck Quick Drying Primer	Alkyd	2	50				Mandarin Duck Quick Drying Primer	Alkyd	4	40	260	6				x			
C4.04	Epoguard Primer	Epoxy	1	60				Epoguard Enamel	Epoxy	1	60	120	2		x					
C4.05	Epoguard Primer	Epoxy	1	60				Epoguard Enamel	Epoxy	2	60	180	3			x				
C4.06	Rusttech	Epoxy	1	120				Epoguard Enamel	Epoxy	2	60	240	3				x			
C4.07	Rusttech	Epoxy	2	100				Epoguard Enamel	Epoxy	2	50	300	4					x		
C4.07	Rusttech	Epoxy	2	100				Topguard	PU	2	50	300	4					x		
C4.011	Epozinc HB	Epoxy	1	80	Rusttech	Epoxy	1	120	Epoguard Enamel	Epoxy	1	60	260	3				x		
C4.011	Epozinc HB	Epoxy	1	80	Rusttech	Epoxy	1	120	Topguard	PU	1	60	260	3				x		

COATING SYSTEM FOR CARBON STEEL STRUCTURES- ENVIRONMENT CORROSIIVITY CATEGORY C5

System No.	Primer Coat				Intermediate coats				Intermediate & finish coats				Coating system		Durability (Years to mayor first maintenance)			
	Products	Type of Primer	No. Of Coat	Normal DF (µm)	Products	Type of Primer	No. Of Coat	Normal DF (µm)	Products	Type of Primer	No. Of Coat	Normal DF (µm)	Total DFT (µm)	No. Of Coat	Low (up to 7 years)	Medium (7 years -15 years)	High (15 years -25 years)	Very High (More than 25 years)
C5.01	Rusttech	Epoxy	1	120					Epoguard Enamel	Epoxy	1	60	180	2	x			
C5.01	Rusttech	Epoxy	1	120					Topguard	PU	1	60	180	2	x			
C5.02	Rusttech	Epoxy	1	120					Epoguard Enamel	Epoxy	2	60	240	3		x		
C5.02	Rusttech	Epoxy	1	120					Topguard	PU	2	60	240	3		x		
C5.03	Rusttech	Epoxy	2	120					Epoguard Enamel	Epoxy	1	60	300	3			x	
C5.03	Rusttech	Epoxy	2	120					Topguard	PU	1	60	300	3			x	
C5.04	Rusttech	Epoxy	2	120					Epoguard Enamel	Epoxy	2	60	360	4				x
C5.04	Rusttech	Epoxy	2	120					Topguard	PU	2	60	360	4				x
C5.08	Epozinc HB	Epoxy	1	80	Rusttech	Epoxy	1	120	Topguard	PU	2	60	320	3				x

COATING SYSTEM FOR HOT DIP GALVANIZED STEEL STRUCTURES

System No.	Corrosion category	Primer Coat				Intermediate & finish coats				Coating system		Durability (Years to mayor first maintenance)			
		Products	Type of Primer	No. Of Coat	Norminal DF (µm)	Products	Type of Primer	No. Of Coat	Norminal DF (µm)	Total DFT (µm)	No. Of Coat	Low (up to 7 years)	Medium (7 years -15 years)	High (15 years -25 years)	Very High (More than 25 years)
G2.01	C2	TOA 2 in 1	Acrylic	1	40	TOA 2 in 1	Acrylic	1	40	80	2			x	
G2.02		Epoguard Primer	Epoxy	1	60	Topguard	PU	1	60	120	2				x
G3.01	C3	TOA 2 in 1	Acrylic	1	40	TOA 2 in 1	Acrylic	1	40	80	2		x		
G3.02		Epoguard Primer	Epoxy	1	60	Topguard	PU	1	60	120	2			x	
G3.04		Epoguard Primer	Epoxy	1	100	Topguard	PU	2	60	160	2				x
G4.02	C4	Epoguard Primer	Epoxy	1	60	Topguard	PU	1	60	120	2			x	
G4.04		Epoguard Primer	Epoxy	1	100	Topguard	PU	1	60	160	2				x
G4.06		Rusttech	Epoxy	1	100	Topguard	PU	1	60	160	2				x
G4.06	C5	Epoguard Primer	Epoxy	1	100	Topguard	PU	2	50	200	3				x
G5.01		Epoguard Primer	Epoxy	1	60	Topguard	PU	1	60	120	2		x		
G5.02		Epoguard Primer	Epoxy	1	100	Topguard	PU	1	60	160	3			x	
G5.04		Epoguard Primer	Epoxy	1	100	Topguard	PU	2	50	200	3				x
G5.05		Rusttech	Epoxy	2	60	Topguard	PU	2	60	240	4				

COATING SYSTEM FOR CONCRETE FLOOR COATING

System No.	Primer Coat			Intermediate coats			Finish coats			Coating system		Durability				
	Products	Type of Primer	No. Of Coat	Normal DF (µm)	Products	Type of Primer	No. Of Coat	Normal DF (µm)	Products	Type of Primer	No. Of Coat	Total DFT (µm)	No. Of Coat	Light Duty	Medium duty	Heavy duty
Fl.01	Epoguard Varnish	Epoxy	1	40					Topguard	PU	2	140	3	x		
Fl.02	Epoguard Varnish	Epoxy	1	50					Topguard	PU	2	170	3	x		
Fl.03	Epoguard Varnish	Epoxy	1	50	Rusttech	Epoxy	1	100	Topguard	PU	2	250	3	x		
Fl.04	Epoguard Varnish	Epoxy	1	50	Rusttech	Epoxy	1	150	Topguard	PU	2	300	4		x	
Fl.05	Epoguard Varnish	Epoxy	1	50	Rusttech	Epoxy	2	100	Topguard	PU	2	350	5		x	
Fl.06	Epoguard Varnish	Epoxy	1	50	Rusttech	Epoxy	2	125	Topguard	PU	2	420	4		x	
Fl.07	Epoguard Varnish	Epoxy	1	50	Rusttech	Epoxy	2	150	Topguard	PU	2	470	5			x
Fl.08	Epoguard Varnish	Epoxy	1	50	Rusttech	Epoxy	2	150	Topguard	PU	2	500	5			x
Fl.09	Epoguard Varnish	Epoxy	1	50	Rusttech	Epoxy	3	150	Topguard	PU	2	600	6			x
Fl.10	Epoguard Varnish	Epoxy	1	50					Floorguard 1000 SL	Epoxy	1	3000	2			x

HO CHI MINH OFFICE

8th Floor, Room 8.5, Etown 3 Building, 364 Cong Hoa Street,
Ward 13, Tan Binh District, Ho Chi Minh City.

Tel: (028) 3813 1999

HA NOI OFFICE

CEO Tower, 8th Floor, Pham Hung Street, Me Tri Ward,
Nam Tu Liem District, Ha Noi City.

Tel: (024) 7300 0598

DA NANG OFFICE

2nd Floor, 10 Hai Phong Street, Hai Chau District, Da Nang City.

Tel: (0236) 3887 797

NHA TRANG OFFICE

8AB Floor, 42 Le Thanh Phuong Street, Phuong Sai Ward,
Nha Trang City.

Tel: (0258) 3811 370

CAN THO OFFICE

Hong Phuc Tower, 5th Floor, 28-33 Pham Ngoc Thach,
Cai Khe Ward, Ninh Kieu District, Can Tho City.

Tel: (0292) 3734 113

TOA PAINT (VIETNAM) CO., LTD.

Road No.2, Tan Dong Hiep A IP, Di An City, Binh Duong Province.

Tel: (0274) 3775 678



Facebook



Web